

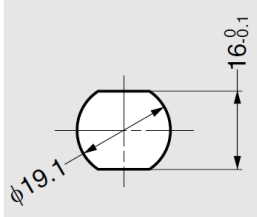
G920BS Cam Lock (With Hole Shutter)

Features

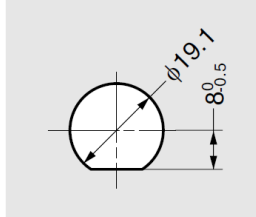
- Cylinder lock with key hole shutter
- Reversible key can only be removed when locked (90° rotation), and ensures that the application is properly locked
- 3,200 key changes available. Master key system available on request (max. 120 key changes per master key)
- Cam can be changed to straight type on request



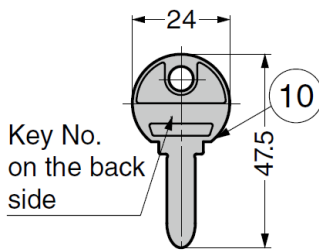
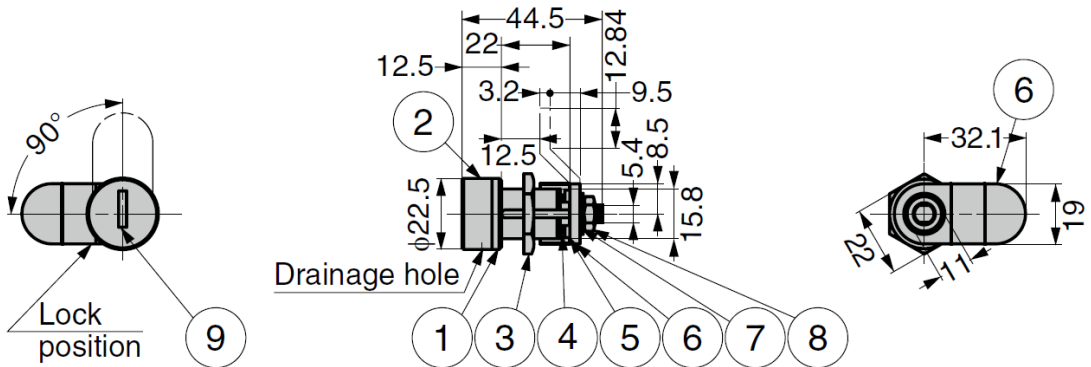
Cut Out Dimensions



Standard type



Master Key system type
(Made to order)



No.	Part Name	Material	Finish
①	Body	Brass	Chrome
②	Cover		
③	M19 Hex Nut	Steel (SS)	Coloured Zinc Chromate (Trivalent)
④	Ring	Stainless Steel	-
⑤	Revolving Part	Steel (SPCC)	Coloured Zinc Chromate (Trivalent)
⑥	Cam		
⑦	Washer	Steel	
⑧	M7 Hex Nut	Steel (SS)	
⑨	Shutter	Stainless Steel	-
⑩	Key	Brass	Nickel

Part No.	Key Type	Door Thickness
G920BS-B	Keyed Differently	0.8 ~ 12
G920BS-D	Keyed Alike	